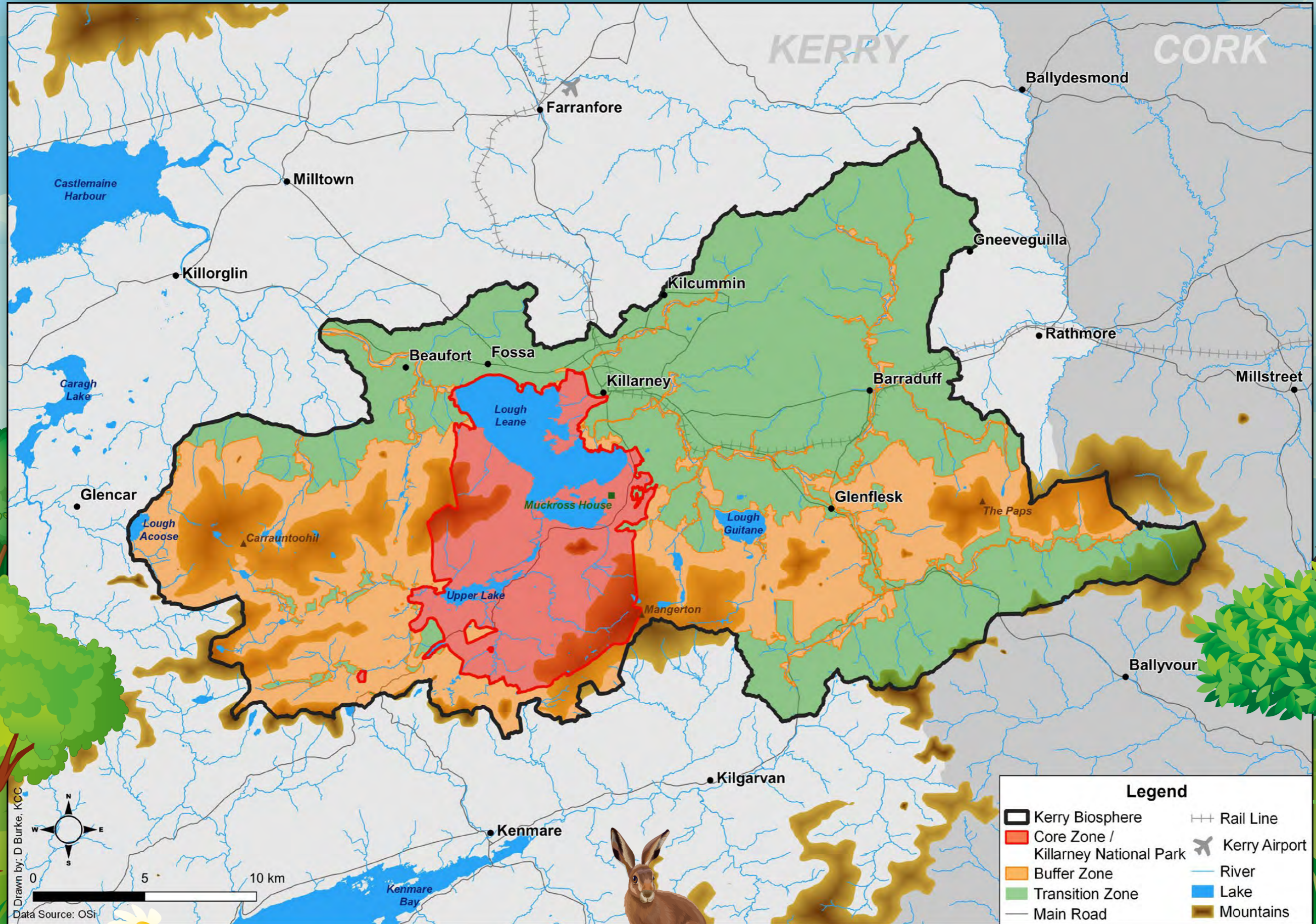
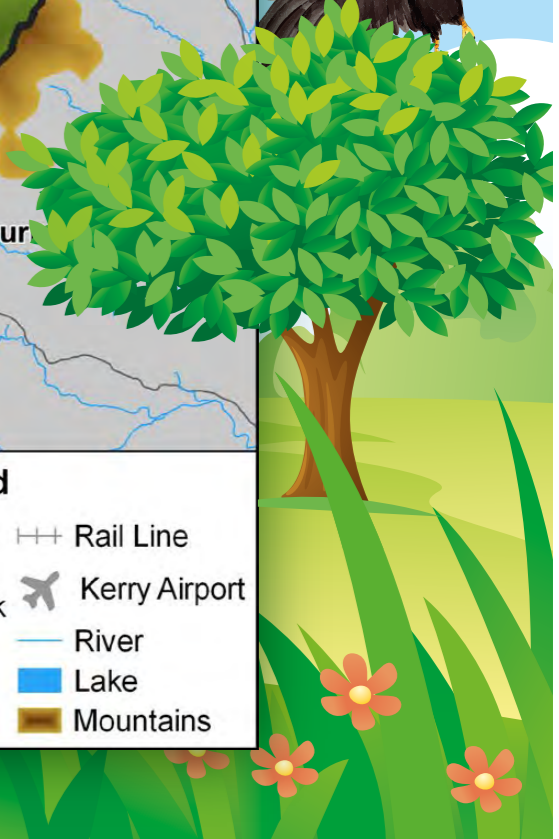
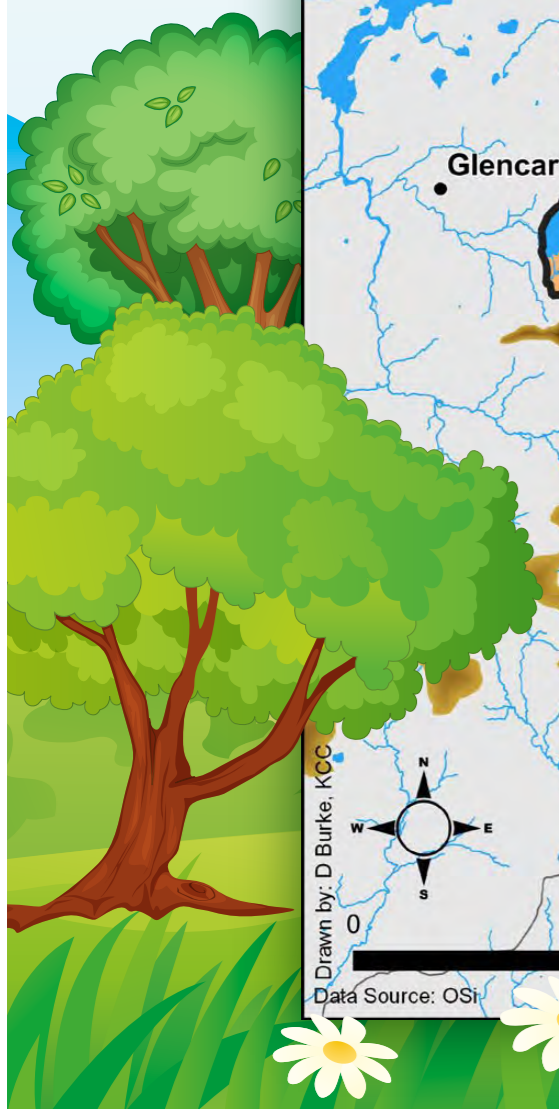
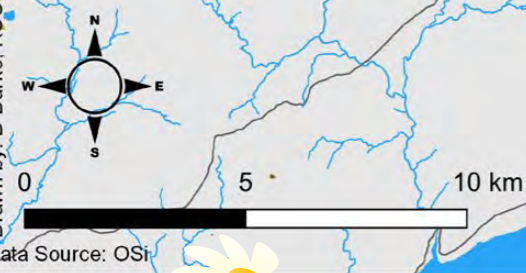


# Kerry UNESCO Biosphere Reserve



Drawn by: D Burke, KCC  
Data Source: OSI



# Welcome to the Kerry UNESCO Biosphere Reserve



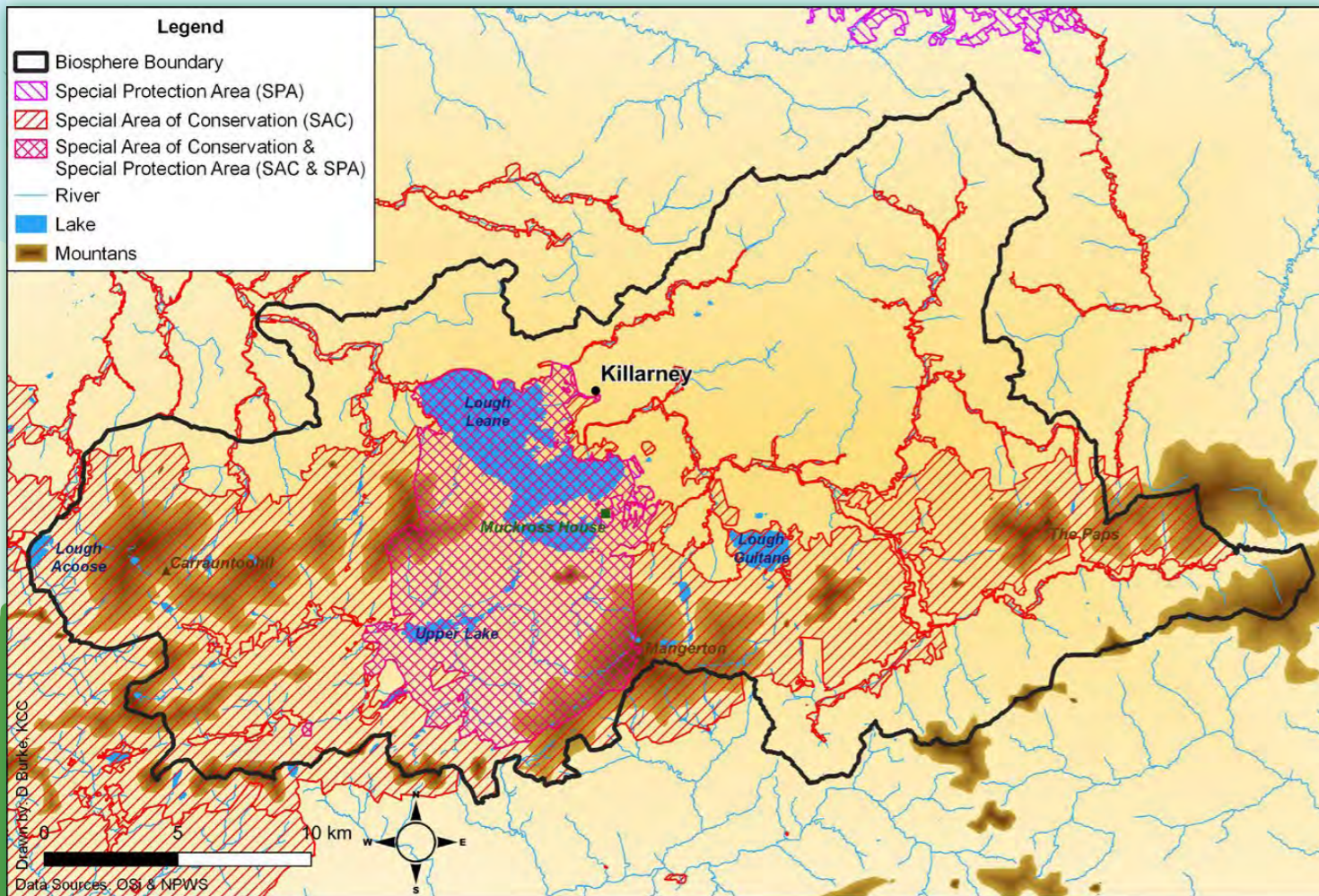
## Protected areas of the Kerry UNESCO Biosphere Reserve

Protected areas are created to help protect both habitats and species that are becoming endangered. The Kerry UNESCO Biosphere Reserve includes several of these European sites of Nature Conservation.

Special areas of Conservation (SAC) are created to protect habitats and animals.

Special protection areas (SPA) are created to help protect bird species that may live in an area all year round or that may use a certain area during migrations.

This map shows the areas of the Kerry UNESCO Biosphere Reserve that are also designated as SACs and SPAs.



SACs and SPAs have been created all around Ireland to help protect our native habitats and species.

Some of the habitats and species found in the Kerry Biosphere Reserve include:

- Lakes
- Sessile oak woods
- Alluvial forest
- Otters
- Kerry slug
- Freshwater pearl mussel
- Killarney Fern
- Marsh Fritillary



## Word Search



- meadows
- bogs
- forest
- slug
- mussel
- salmon
- otter
- fern
- bat
- killarney
- farming
- biosphere
- nature
- lough

F I V T D J K N Z W I X K U M  
 E E K B I O S P H E R E I D U  
 M V R W T C J B Y X T R L W S  
 E H Y N N K M O T T E R L Z S  
 A W G O A T S D I Y D B A M E  
 D P Z A T S A L M O N O R W L  
 O I L E U F Y Y U G G G N V O  
 W U H W R A C H Z G O S E F G  
 S W G X E R G D G M I D Y Y H  
 D J P X Y M S X W F V W C S R  
 S K E Z I I L L O U G H Z L  
 A A D C S N P U R R X P K J B  
 L J Y I J G O L R E Y W J B Z  
 S O O L U F X A C S R M V A G  
 N B R J X P P I Q T U Z D T Y

## Complete the sentence

The Kerry UNESCO B\_\_s\_h\_r\_ Reserve covers a total area of approx. 65,000 hectares and includes areas of the M\_\_G\_\_ \_\_y\_\_ \_\_y R\_\_ks mountain range and all of K\_\_ \_\_y National Park.

Healthy Ecosystems help to provide e\_\_sy\_\_ \_\_m services for humans like clean drinking water, clean air to b\_\_ \_\_h and help to pr\_v\_nt flooding.

The Killarney F\_\_ n and the K\_\_ \_\_y slug are two examples of n\_t\_\_e species that can be found in the Kerry UNESCO Biosphere Reserve, both of these s\_\_c\_\_s are also protected.

Upland f\_\_s in Kerry include large areas of wet h\_\_th, which are important carbon stores and help to stop cl\_m\_t\_ change.

## Unscramble the words

HHIG TREUNA VUELA \_\_\_\_\_

LDSCAYCDMGLIYU RKESE \_\_\_\_\_

LAUAILLV SRTSFOE \_\_\_\_\_

RYRKE USGL \_\_\_\_\_

AFEWSEHRTR LRPEA USMFLRS \_\_\_\_\_

EPEHORSIB VESREER \_\_\_\_\_

The solution can be found on the page



An Roinn Tithíochta, Rialtais Áitiúil agus Oidhreachta  
 Department of Housing, Local Government and Heritage



Páirceanna Náisiúnta  
 National Parks



Clár Éire Ildánach  
 Creative Ireland Programme  
 2017-2022

